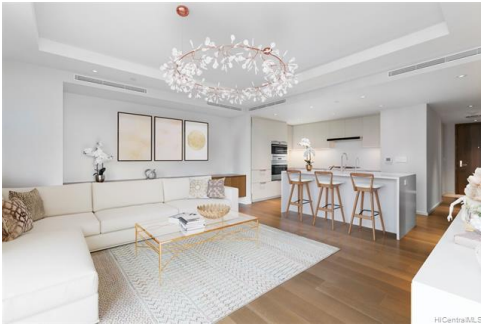


Residential Client Full

1-2-3-038-013-0029 **1388 Ala Moana Blvd #1700, Honolulu 96814** List Price: **\$2,450,000**
 MLS#: **202128623** Region: **Metro** Bldg Nm: **Park Lane**
 Status: **Active** Nghbrhd: **ALA MOANA**
 Lnd Tenure: **FS - Fee Simple** Fee Options:



General Information

Prop Type: **Condo/Townhouse**
 Style: **High-Rise 7+ Stories**
 Prop Cond: **Excellent**

Sqft Information

Grg/Car Sqft:
 Sqft Liv: **1,063**
 Lanai Sqft:
 Sqft Oth:
 Total Sqft: **1,063**
 Lot Acres:

Bldg Information

Beds: **1**
 Baths: **1/0**
 New Dev: **No**
 Ttl Park: **1**
 Stories:
 Year Built: **2016**

DOM: **130**
 Furnished: **None**
 Fract Own: **No**

School Information

Elem: **Kaahumanu**
 Middle: **Stevenson**
 High: **Mckinley**

Additional Information

View: **City, Coastline, Ocean, Sunset**
 Zoning: **33 - BMX-3 Community Business M**
 Flood Zone: **Zone AE**
 Prop Frnt: **Ocean**
 Land Recorded: **Land Court**

Listing/Office Information

Listing Date: **11/09/21**
 Possession: **At Closing**
 Office: **Locations LLC**

Corp Office Lic #: **RB-17095**

Remarks

Pub Rmks: **Come home to the finest of the ultimate Hawaii ultra-luxurious living, with exceptional range of service, private amenities, direct access to high-end designer shopping, dining, night life, and outdoor activities, in the heart of Honolulu. Discover the world class art collections in the timeless serenity of a private sanctuary surrounded by lush island flora. Feel the gracious open-air lobby, and enjoy your revitalizing 5 star resort-style life, valet, concierge service, private theater, dining/party room, chef's kitchen, wine bar, gated dog park, rejuvenating spa/fitness facilities. This sophisticated, brand-new look, never lived, 1 bedroom, 1 bath, 1 parking in corner unit is located at the prime location of the Club Residences in Park Lane. Its pristine and sleek designer appliances, atmosphere lighting, and European oak flooring, perfectly collaborate with the spectacular ocean view through the floor to ceiling window like an art piece. Incredible value! Priced (at \$2.45mil) below the property tax assessed value(\$2.62mil).**

Association/Condo Information

Assoc Fees:
 Maintenance Fee: **\$1,470.73**
 Oth Fees Mthly:
 Condo Park Unit: **1**
 Unit Features:
 Owner Occpncy%:
 Mgmt Co: **Hawaiiana**
 Community Assn:
 Public Report #:

Ttl Mon Fees: **\$1,471.00**
 Fee Includes: **Cable TV, Gas, Internet Service, Other Common Expenses**
 Oth Mthly Fees Incl: **None**
 Condo Prp Reg:
 Floor #: **7**
Bedroom on 1st Level, Central AC, Corner/End, Even# Unit, Full Bath on 1st Floor, Single Level, Storage
 # Elevators:
 Mgmt Co #: **808-593-9100**
 Assoc Phone:

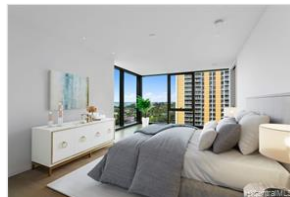
Features

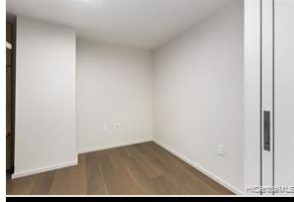
Story Type: **One**
 Parking: **Assigned, Covered - 1, Garage, Guest, Secured Entry**
 Roofing:
 Topography:
 Security Feat:
 Amenities: **Card, Key, Keyed Elevator, Security Patrol, Video BBQ, Club House, Concierge, Dog Park, Doorman, Exercise Room, Fire Sprinkler, Heated Pool, Meeting Room, Other, Patio/Deck, Playground, Pool on Property, Recreation Area, Recreation Room, Resident Manager, Sauna, Security Guard, Storage, Trash Chute, Valet, Walking/Jogging Path, Whirlpool**
 Inclusions: **AC Central, Auto Garage Door Opener, Dishwasher, Disposal, Dryer, Microwave, Range Hood, Range/Oven, Refrigerator, Smoke Detector, Washer, Wine Refrigerator**
 Disclosures: **Non Resident Owner, Pets Allowed (Verify)**

Tax & Financial Information

TMK: **1-2-3-038-013-0029**
 Taxes/Mnthly: **\$1,796** Tax Assess Imp: **\$2,437,100** Terms Acceptable: **Cash, Conventional**
 Tax Year: **2021** Tax Assess Lnd: **\$187,400** Rent Inc Mthly:
 Home Exempt: **0** Tax Assess Tot: **\$2,624,500** Spcl Sales Cond: **None**

Click on the arrow to view Additional Photos





© HiCentral MLS, Ltd.®. All rights reserved. Information herein deemed reliable but not guaranteed. Generated on 03/19/2022 7:13:49 PM

©2017-2022 HiCentral MLS, Ltd.®. All rights reserved. Information herein deemed reliable but not guaranteed.